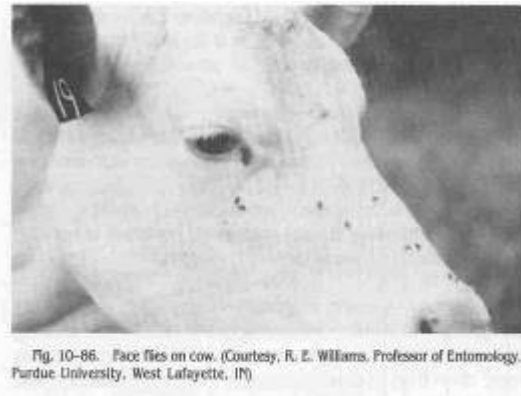


## Face Fly

*Musca autumnalis*



The Face Fly was first found in this country in New York in 1953

- ❖ Close relative of and similar to the house fly

### Description

- Slightly larger than house fly abdomen and brownish-yellow or red markings near the base

### Life Cycle

- Eggs are laid in manure or other decaying organic matter
- Eggs hatch in 8-20 hours
- Larvae grow to maturity in 5-14 days
- Pupal stage varies from 3-10 days

### Symptoms of Infection

- Clusters around eyes, mouth, nostrils and is extremely annoying to animals interfering with their vision and breathing and preventing normal grazing

### Effect on Host

- Does not bite
- Large populations form dense clouds around the animal's face and rest on the animal's face and rests on fence posts, gates, sides of barns, etc. The adult fly hibernates in attics and other protected places during the winter. These areas can be treated.

### Treatment

- Insecticide
- Insecticide

### Prevention & Control

- Proper sanitation
- Insecticides
- Scatter or remove manure to eliminate breeding sites
- When cattle enter barn or dark areas, these areas can be treated.

